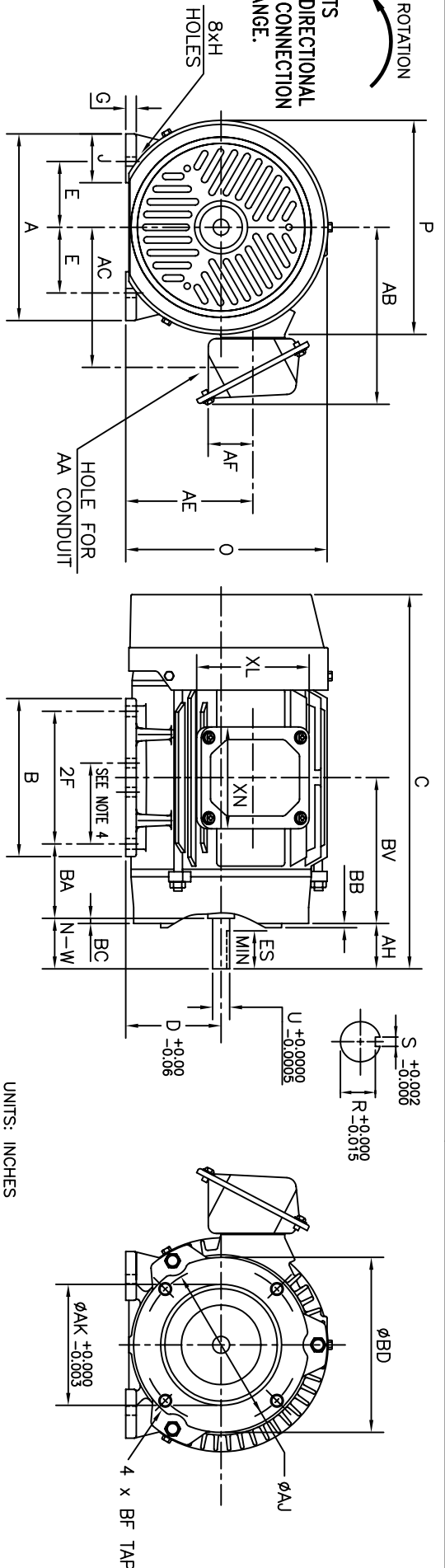


INDEX	MDSL0006-15
REV. LEVEL	1
SHEET	1 OF 1

UNITS  
BI-DIRECTIONAL  
BY CONNECTION  
CHANGE.



FRAME SIZE	MOUNTING				FLANGE				CONDUIT BOX			
	E	2F	H	BA	AH	AU	AK	BB	BC	BD	BF TAP	BV
56C	2.44	3.00	0.34	2.75	1.69	5.875	4.500	0.16	0.19	6.50	3/8"-16UNC	5.44
56H	2.44	5.00	0.34	2.75	1.69	5.875	4.500	0.16	0.19	6.50	3/8"-16UNC	5.44

FRAME SIZE	MOTOR DIMENSIONS				CONDUIT BOX										
	A	B	C	D	G	J	O	P	AA	AB	AC	AE	AF	XL	XN
56C/56H	6.9	5.9	13.9	3.50	0.28	1.8	7.5	8.0	1.06	6.5	5.2	4.7	1.7	4.2	3.8

FRAME SIZE	SHAFT EXTENSION				KEY SEAT				BEARINGS				MAXIMUM WEIGHT
	N-W	V	U	R	S	ES	LS	OS					
56C/56H	1.88	1.63	0.625	0.517	0.188	1.41	6205ZZ	6205ZZ	55 lbs.				

CERTIFIED DATA

ALL DATA SUBJECT TO CHANGE  
WITHOUT NOTICE  
FOR CONSTRUCTION USE ONLY  
CERTIFIED DATA

- NOTES:
1. DIMENSION V REPRESENTS LENGTH OF STRAIGHT PART OF SHAFT.
  2. CONDUIT BOX MAY BE ROTATED IN 90° INCREMENTS AND MAY BE MOUNTED ON OPPOSITE SIDE ON SPECIAL ORDER.
  3. KEY DIMENSIONS EQUAL S x S x 1.38 (MOTOR SUPPLIED WITH KEY)
  4. DIMENSIONS FOR 56C MOUNTING EQUAL (2F) LOCATED IN 56C SIDE VIEW.
  5. MOTOR WEIGHT SHOWN IS MAXIMUM HORSEPOWER IN FRAME.

**TOSHIBA/HOUSTON**

CUSTOMER: \_\_\_\_\_ P.O. NO.: \_\_\_\_\_ TAG NO.: \_\_\_\_\_  
 MOTOR MODEL NO.: \_\_\_\_\_ TOSHIBA FILE NO.: \_\_\_\_\_  
 HP: \_\_\_\_\_ RPM (SYN.): \_\_\_\_\_ VOLTAGE: \_\_\_\_\_ Hz: \_\_\_\_\_  
 FRAME SIZE: \_\_\_\_\_ LOG NO.: \_\_\_\_\_ LOG REV. LEVEL: \_\_\_\_\_  
 REMARKS: \_\_\_\_\_  
 PER: \_\_\_\_\_ ISSUE DATE: \_\_\_\_\_ SUPERSEDES: \_\_\_\_\_

TOTALLY-ENCLOSED  
FAN COOLED  
FOOT-MOUNTED  
WITH C-FACE FLANGE  
Fr. 56C/56H