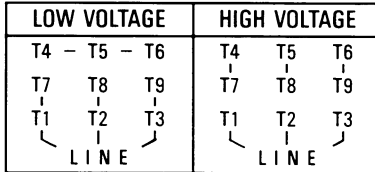


CONNECTION DIAGRAMS

A. Wye-connected Dual Voltage (low/high voltage) (9 Leads)

POLE	ODP	TEFC & EXP
2P	1 1/2 HP-7 1/2HP	1 1/2 HP-5HP
4P	1HP-5HP	1HP-5HP
6P	3/4 HP-5HP	3/4 HP-5HP
8P	3/4 HP-5HP	3/4 HP-5HP

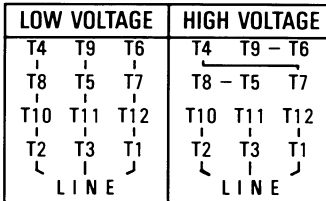
A-1 Across the Line Starting



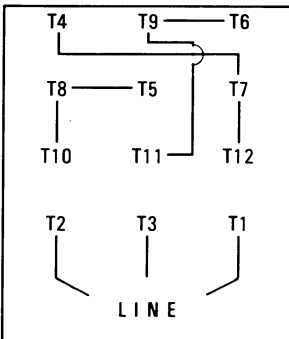
B. Delta-connected Dual Voltage (12 Leads)

POLE	ODP	TEFC & EXP
2 P	10HP-250HP	7 1/2HP-150HP
4 P	7 1/2HP-200HP	7 1/2HP-150HP
6 P	7 1/2HP-125HP	7 1/2HP-125HP
8 P	7 1/2HP-100HP	7 1/2HP-100HP

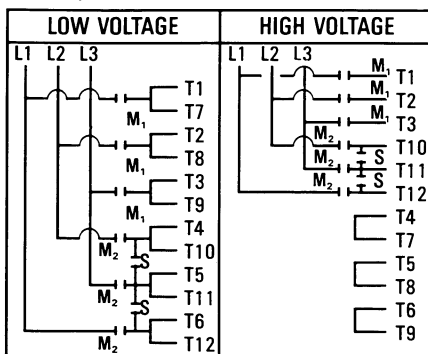
B-1 Across the Line Starting



B-2 575 Volt Connection (see Note 1)

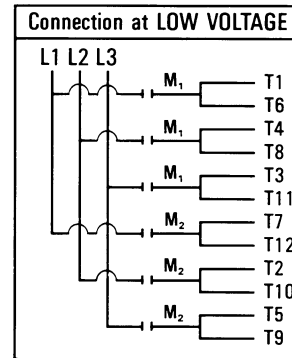


B-3 Wye Start Delta Run



	Start	Run
M ₁	Close	Close
M ₂	Open	Close
S	Close	Open

B-4 Part Winding Starting (see Note 2)



	Start	Run
M ₁	Close	Close
M ₂	Open	Close

M₂ should be energized within 2 seconds after M₁ is energized.

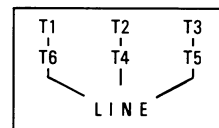
NOTES:

- 230/460 Volt Motors can be used on 575 Volt network in accordance with B-2 connection.
- 4 pole and 6 pole motors are satisfactory for Part Winding starting at low voltage.

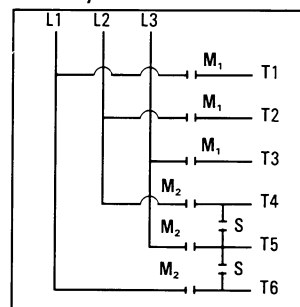
C. Delta-connected Single Voltage (6 Leads)

POLE	ODP	TEFC & EXP
2 P	300HP-350HP	200HP-300HP
8 P	125HP-250HP	125HP-250HP

C-1 Across the Line Starting



C-2 Wye Start Delta Run



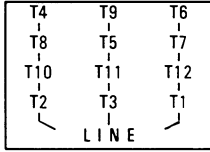
	Start	Run
M ₁	Close	Close
M ₂	Open	Close
S	Close	Open

CONNECTION DIAGRAMS CONT.

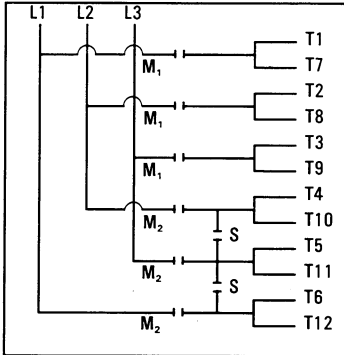
D. Delta-connected Single Voltage (12 Leads)

POLE	ODP	TEFC & EXP
2 P	400HP-600HP	—
4 P	250HP-400HP	200HP-400HP
6 P	150HP-300HP	150HP-300HP

D-1 Across the Line Starting

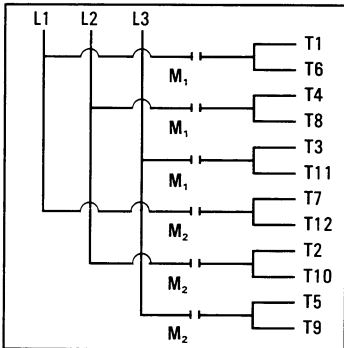


D-2 Wye Start Delta Run



	Start	Run
M ₁	Close	Close
M ₂	Open	Close
S	Close	Open

D-3 Part Winding Starting (4 pole and 6 pole motors)



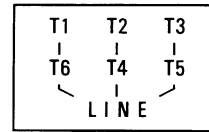
	Start	Run
M ₁	Close	Close
M ₂	Open	Close

M₂ should be energized within 2 seconds after M₁ is energized.

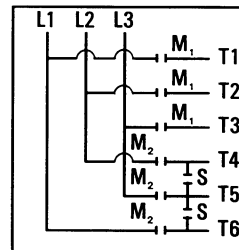
F. Delta-connected 575 Volt Motors (6 Leads)

POLE	ODP	TEFC & EXP
2 P	10HP-500HP	7½HP-300HP
4 P	7½HP-400HP	7½HP-400HP
6 P	7½HP-300HP	7½HP-300HP
8 P	7½HP-250HP	7½HP-250HP

F-1 Across the Line Starting



F-2 Wye Start Delta Run

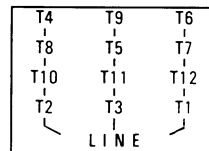


	Start	Run
M ₁	Close	Close
M ₂	Open	Close
S	Close	Open

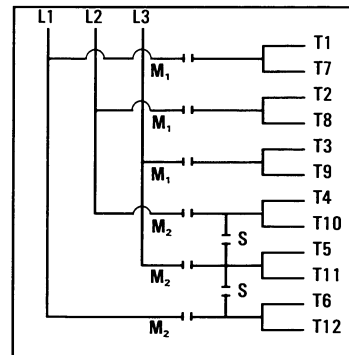
G. Delta-connected 575 Volt Motors (12 Leads)

POLE	ODP
2 P	600HP

G-1 Across the Line Starting



G-2 Wye Start Delta Run



	Start	Run
M ₁	Close	Close
M ₂	Open	Close
S	Close	Open

E. Wye-connected 575 Volt Motors (3 Leads)

POLE	ODP	TEFC & EXP
2 P	1½HP-7½HP	1½HP-5HP
4 P	1HP-5HP	1HP-5HP
6 P	¾HP-5HP	¾HP-5HP
8 P	¾HP-5HP	¾HP-5HP

E-1 Across the Line Starting

