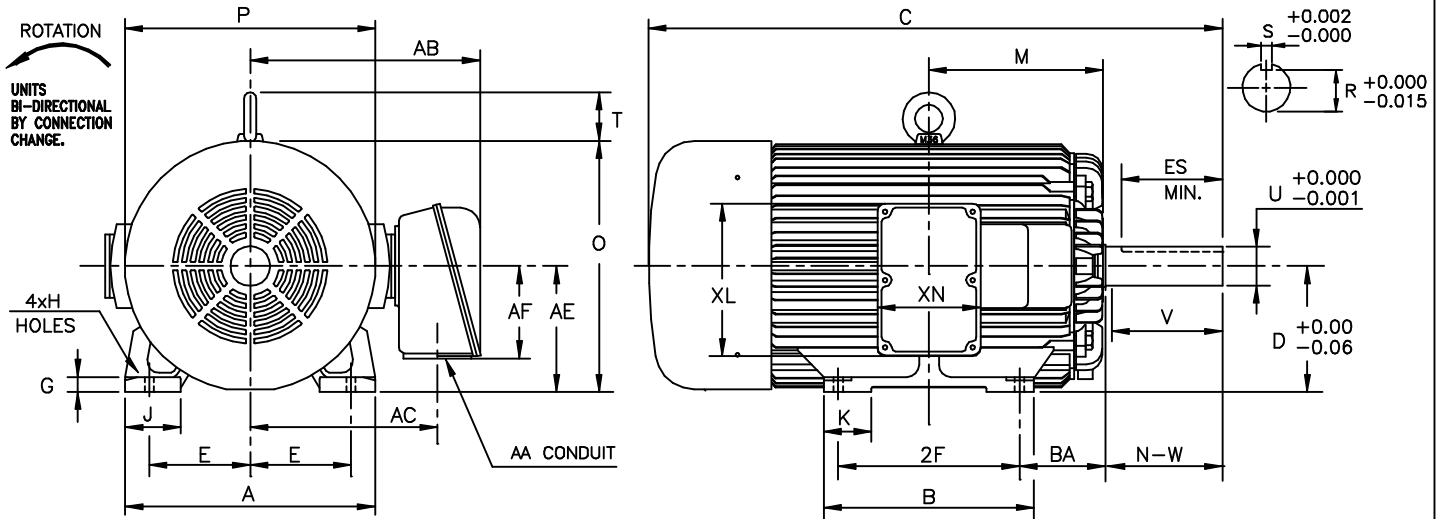


INDEX	MDSL0031-16
REV. LEVEL	0
SHEET	1 OF 1

TOSHIBA/HOUSTON
EQP III "XS" & "841"

TOTALLY-ENCLOSED FAN-COOLED
HORIZONTAL FOOT-MOUNTED
PREMIUM EFFICIENCY SEVERE DUTY

Fr. 505UZ/505US
4-8 POLE



UNITS: INCHES

FRAME SIZE	MOUNTING				CONDUIT BOX							
	E	2F	H	BA	AA	AB	AC	AE	AF	XL	XN	
505UZ/505US	10.00	18.0	0.94	8.50	4.00	22.8	18.6	12.5	9.2	15.2	10.2	

FRAME SIZE	MOTOR DIMENSIONS										
	A	B	C	D	G	J	K	M	O	P	T
505UZ	24.8	20.9	57.0	12.50	1.5	5.5	4.7	17.3	25.0	24.9	3.7
505US	24.8	20.9	50.1	12.50	1.5	5.5	4.7	17.3	25.0	24.9	3.7

FRAME SIZE	SHAFT EXTENSION			KEY SEAT			BEARINGS		MAXIMUM WEIGHT
	N-W	V	U	R	S	ES	LS	OS	
505UZ	11.62	11.38	3.875	3.309	1.000	10.03	NU322C3	6318C3	4089 lbs.
505US	4.75	4.50	2.875	2.450	0.750	3.03	6318C3	6318C3	4089 lbs.

NOTES:

- DIMENSION V REPRESENTS LENGTH OF STRAIGHT PART OF SHAFT.
- CONDUIT BOX MAY BE ROTATED IN 90° INCREMENTS AND MAY BE MOUNTED ON OPPOSITE SIDE ON SPECIAL ORDER.
- "UZ" KEY DIMENSIONS EQUAL S x S x 10.00
"US" KEY DIMENSIONS EQUAL S x S x 3.00
(MOTOR SUPPLIED WITH KEY)
- MOTOR WEIGHT SHOWN IS MAXIMUM HORSEPOWER IN FRAME.

ALL DATA SUBJECT TO CHANGE WITHOUT NOTICE.
FOR CONSTRUCTION USE ONLY CERTIFIED DATA.

CERTIFIED DATA

CUSTOMER: _____ P.O. NO.: _____ TAG NO.: _____
 MOTOR MODEL NO.: _____ TOSHIBA FILE NO.: _____
 HP: _____ RPM (SYN.): _____ VOLTAGE: _____ Hz: _____
 FRAME SIZE: _____ LOG NO.: _____ LOG REV. LEVEL: _____
 REMARKS: _____

PER: _____ ISSUE DATE: _____ SUPERSEDES: _____