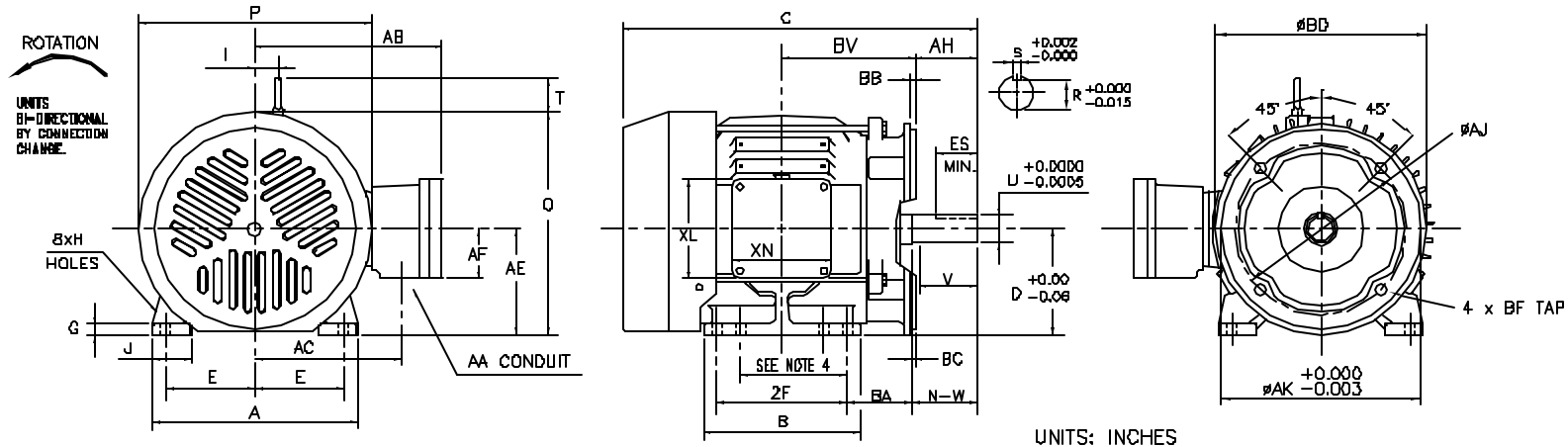


INDEX	MDSL0046-02
REV. LEVEL	0
SHEET	1 OF 1



FRAME SIZE	MOUNTING				FLANGE							
	E	2F	H	BA	AH	AJ	AK	BB	BC	BD	BF TAP	BV
182TC	3.75	4.50	0.44	2.75	2.62	7.250	8.500	D.25	0.13	8.94	1/2"-13UNC	5.13
184TC	3.75	5.50	0.44	2.75	2.62	7.250	8.500	D.25	0.13	8.94	1/2"-13UNC	5.63

FRAME SIZE	MOTOR DIMENSIONS										CONDUIT BOX						
	A	B	C	D	G	I	J	O	P	T	AA	AB	AC	AE	AF	XL	XN
182TC/184TC	8.7	6.6	15.5	4.50	0.5	1.0	1.6	9.4	9.8	1.7	0.75	8.3	6.4	4.5	3.2	6.1	4.8

FRAME SIZE	SHAFT EXTENSION			KEY SEAT			BEARINGS		MAXIMUM WEIGHT
	N-W	V	U	R	S	ES	LS	OS	
182TC/184TC	2.75	2.50	1.125	0.986	0.250	1.78	6306UUC3	6306UUC3	120 lbs.

- NOTES:
1. DIMENSION V REPRESENTS LENGTH OF STRAIGHT PART OF SHAFT.
  2. CONDUIT BOX MAY BE ROTATED IN 90° INCREMENTS AND MAY BE MOUNTED ON OPPOSITE SIDE ON SPECIAL ORDER.
  3. KEY DIMENSIONS EQUAL S x S x 1.75 (MOTOR SUPPLIED WITH KEY)
  4. DIMENSIONS FOR 182T MOUNTING EQUAL (2F) LOCATED IN 182T SIDE VIEW.
  5. MOTOR WEIGHT SHOWN IS MAXIMUM HORSEPOWER IN FRAME.

ALL DATA SUBJECT TO CHANGE WITHOUT NOTICE FOR CONSTRUCTION USE ONLY CERTIFIED DATA

CERTIFIED DATA

CUSTOMER: \_\_\_\_\_ P.O. NO.: \_\_\_\_\_ TAG NO.: \_\_\_\_\_  
 MOTOR MODEL NO.: \_\_\_\_\_ TOSHIBA FILE NO.: \_\_\_\_\_  
 HP: \_\_\_\_\_ RPM (SYN.): \_\_\_\_\_ VOLTAGE: \_\_\_\_\_ Hz: \_\_\_\_\_  
 FRAME SIZE: \_\_\_\_\_ LOG NO.: \_\_\_\_\_ LOG REV. LEVEL: \_\_\_\_\_  
 REMARKS: \_\_\_\_\_  
 PER: \_\_\_\_\_ ISSUE DATE: \_\_\_\_\_ SUPERSEDES: \_\_\_\_\_

**TOSHIBA/HOUSTON**  
**EXPLOSION PROOF**  
 HAZARDOUS LOCATION  
 CLASS I GROUP D  
 CLASS II GROUP E, F, AND G

---

**TOTALLY-ENCLOSED**  
**FAN-COOLED**  
**FOOT-MOUNTED**  
**WITH C-FACE FLANGE**  
**Fr. 182TC-184TC**

SL004602