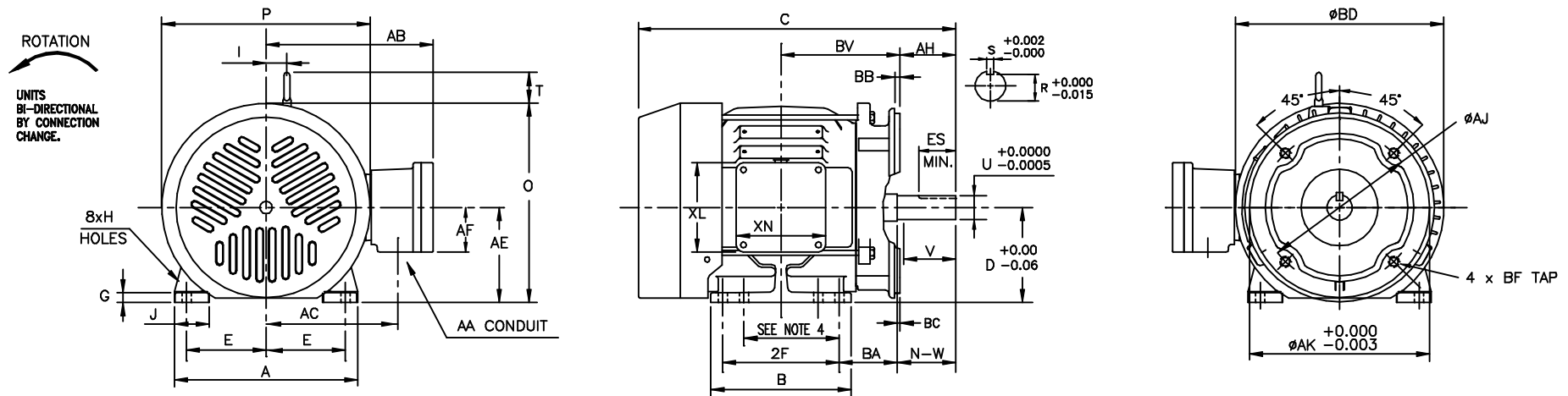


INDEX	MDSL0041-18
REV. LEVEL	0
SHEET	1 OF 1



FRAME SIZE	MOUNTING				FLANGE							
	E	2F	H	BA	AH	AJ	AK	BB	BC	BD	BF TAP	BV
182TC	3.75	4.50	0.44	2.75	2.62	7.250	8.500	0.25	0.13	8.94	1/2"-13UNC	5.63
184TC	3.75	5.50	0.44	2.75	2.62	7.250	8.500	0.25	0.13	8.94	1/2"-13UNC	5.63

UNITS: INCHES

FRAME SIZE	MOTOR DIMENSIONS											CONDUIT BOX						
	A	B	C	D	G	I	J	M	O	P	T	AA	AB	AC	AE	AF	XL	XN
182TC/184TC	8.7	6.6	15.5	4.50	0.5	1.0	1.6	5.3	9.4	9.8	1.7	0.75	7.9	6.4	4.5	2.1	4.2	4.2

FRAME SIZE	SHAFT EXTENSION			KEY SEAT			BEARINGS		MAXIMUM WEIGHT
	N-W	V	U	R	S	ES	LS	OS	
182TC/184TC	2.75	2.50	1.125	0.986	0.250	1.78	6306UU	6306UU	120 lbs.

ALL DATA SUBJECT TO CHANGE WITHOUT NOTICE.
FOR CONSTRUCTION USE ONLY CERTIFIED DATA.

CERTIFIED DATA

CUSTOMER: _____ P.O. NO.: _____ TAG NO.: _____
 MOTOR MODEL NO.: _____ TOSHIBA FILE NO.: _____
 HP: _____ RPM (SYN.): _____ VOLTAGE: _____ Hz: _____
 FRAME SIZE: _____ LOG NO.: _____ LOG REV. LEVEL: _____
 REMARKS: _____
 PER: _____ ISSUE DATE: _____ SUPERSEDES: _____

NOTES:

1. DIMENSION V REPRESENTS LENGTH OF STRAIGHT PART OF SHAFT.
2. CONDUIT BOX MAY BE ROTATED IN 90° INCREMENTS AND MAY BE MOUNTED ON OPPOSITE SIDE ON SPECIAL ORDER.
3. KEY DIMENSIONS EQUAL S x S x 1.75 (MOTOR SUPPLIED WITH KEY)
4. DIMENSIONS FOR 182T MOUNTING EQUAL (2F) LOCATED IN 182T SIDE VIEW.
5. MOTOR WEIGHT SHOWN IS MAXIMUM HORSEPOWER IN FRAME.

TOSHIBA/HOUSTON

**TOTALLY-ENCLOSED
FAN-COOLED
FOOT-MOUNTED
EXPLOSION PROOF
Fr. 182TC-184TC
HAZARDOUS LOCATION
CLASS I GROUP D
CLASS II GROUP E, F, and G**