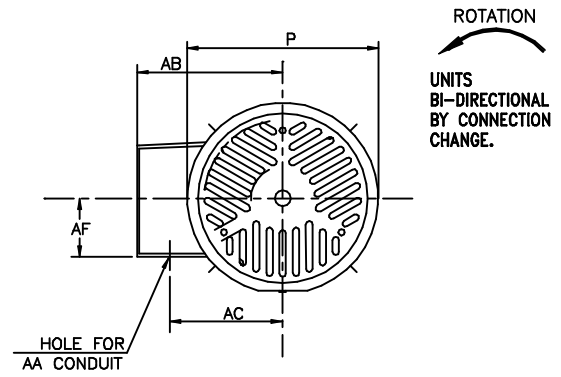
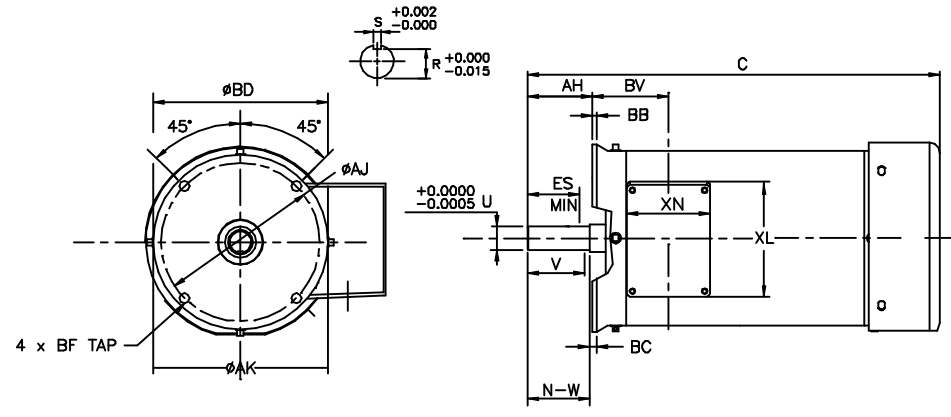


INDEX	MDSL0062-04
REV. LEVEL	2
SHEET	1 OF 1



UNITS: INCHES

FRAME SIZE	FLANGE							
	AH	AJ	AK	BB	BC	BD	BF TAP	BV
182TCZ/184TCZ	2.62	7.250	8.50	0.275	0.12	8.50	1/2"-13UNC	2.24

FRAME SIZE	MOTOR DIMENSIONS		CONDUIT BOX					
	C	P	AA	AB	AC	AF	XL	XN
182TCZ/184TCZ	16.9	8.50	0.75	6.39	5.32	2.56	5.12	3.54

FRAME SIZE	SHAFT EXTENSION			KEY SEAT			BEARINGS		MAXIMUM WEIGHT
	N-W	V	U	R	S	ES	LS	OS	
182TCZ/184TCZ	2.75	2.5	1.125	0.986	0.25	1.8	6207UUC3	6205UUC3	115 lbs

NOTES:

1. DIMENSION V REPRESENTS LENGTH OF STRAIGHT PART OF SHAFT.
2. CONDUIT BOX MAY BE ROTATED IN 180° INCREMENTS
3. KEY DIMENSIONS EQUAL S x S x 1.38 (MOTOR SUPPLIED WITH KEY)
4. MOTOR WEIGHT SHOWN IS MAXIMUM HORSEPOWER IN FRAME.

CERTIFIED DATA

ALL DATA SUBJECT TO CHANGE WITHOUT NOTICE FOR CONSTRUCTION USE ONLY CERTIFIED DATA

CUSTOMER: \_\_\_\_\_ P.O. NO.: \_\_\_\_\_ TAG NO.: \_\_\_\_\_  
MOTOR MODEL NO.: \_\_\_\_\_ TOSHIBA FILE NO.: \_\_\_\_\_  
HP: \_\_\_\_\_ RPM (SYN.): \_\_\_\_\_ VOLTAGE: \_\_\_\_\_ Hz: \_\_\_\_\_  
FRAME SIZE: \_\_\_\_\_ LOG NO.: \_\_\_\_\_ LOG REV. LEVEL: \_\_\_\_\_  
REMARKS: \_\_\_\_\_  
PER: \_\_\_\_\_ ISSUE DATE: \_\_\_\_\_ SUPERSEDES: \_\_\_\_\_

**TOSHIBA/HOUSTON**

**TOTALLY-ENCLOSED  
FAN-COOLED  
ROUND BODY  
WITH C-FACE FLANGE  
182TCZ - 184TCZ  
TOSHWASH S. S.**