

UNITS: INCHES

**TECHNICAL INFORMATION**

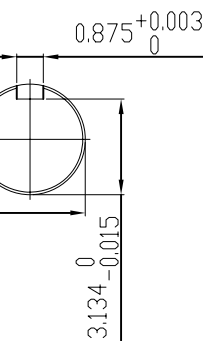
1. BEARING LUBRICATION DE: CHEVRON SRI  
ODE: CHEVRON SRI
2. BEARING TYPE DE: 6320C3  
ODE: 6320C3 INSULATED
3. WINDING TEMP. DETECTORS  
NUMBER AND TYPE: 6xRTD(Pt0°C-100ohm)  
LOCATION: IN STATOR SLOT
4. BEARING TEMP. DETECTORS  
NUMBER AND TYPE: \_\_\_\_\_
5. SPACE HEATER 1 PHASE  
VOLTS: 120 WATTS: 240
6. ROTATION: CCW VIEWED FROM NON DRIVE END  
THIS MOTOR IS BI DIRECTIONAL
7. MOTOR PAINT COLOR: GRAY
8. APPROX. WEIGHT: 5000 Lbs
9. ACCESORIES:

**DRAWING LIST**

**MAIN TERMINAL BOX**  
130-7622-55

**AUX TERMINAL BOX FOR**  
SPACE HEATER 130-7520-50  
R.T.D. 130-7522-51  
THERMISTOR N/A

PRODUCTION # N/A



0 FIRST ISSUE BCS 4/24/07

NO. REVISION BY DATE

**MOTOR OUTLINE FOR  
THREE PHASE INDUCTION MOTOR**

CUSTOMER NAME				P.O. NO.	MOTOR TAG NO.
OUTPUT HP	POLE 4-8	VOLTAGE V	FREQUENCY Hz	FULL LOAD SPEED (min <sup>-1</sup> )	TOSHIBA MODEL NO.
TYPE	FORM	INS. CLASS F	RATING CONT.	FRAME 5009/10/11US	S.F. ENCLOSURE TEFC

TOSHIBA INTERNATIONAL CORPORATION  
HOUSTON, TEXAS U.S.A.

3rd ANGLE PROJ.	PREPARED BY: B SIDLE	DATE: 4/24/07	CHECKED BY: S Johnson	DATE: 4/26/07	DRAWING NO.: MDSL0071-15	REV. 0
-----------------	----------------------	---------------	-----------------------	---------------	--------------------------	--------